

## TOTES

- Sonic Welded
- Reinforced Steel or Galvanized Wire
- Nestable or Straight Wall



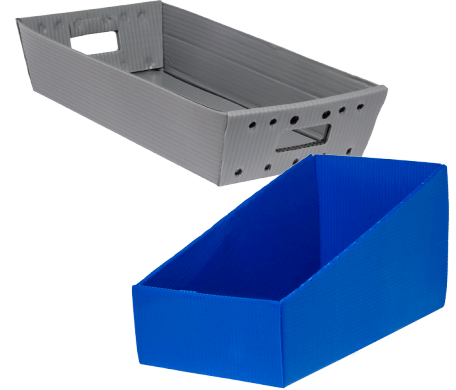
## BOXES/RSC/HSC

- Standard or L-Lock Tops
- Standard or Auto-Lock Bottoms
- Sonic Welded Wrap Tab Seams



## TRAYS

- Hopper Style Available
- Welded or Knockdown
- Nestable or Straight Wall



## PLASTICS

### STANDARD GAUGES & WEIGHTS

- Standard 160# double-faced: 4mm
- Die-cut tolerance: +/- 1/8" max
- Assembled tolerance: +/- 1/4" - 1/2"
- Corona (surface) treatment: 46 dyne

## OPTIONS

### COLORS, PRINTING & ACCESSORIES

- Multiple standard & custom sizes available
- Containers available with or without wrapped hand holes
- Standard colors: yellow, green, blue, black, white, grey, red and natural
- Custom colors and screen-printing available
- Accessories include stackers, dividers, label holders, labels, placards, VELCRO® and more

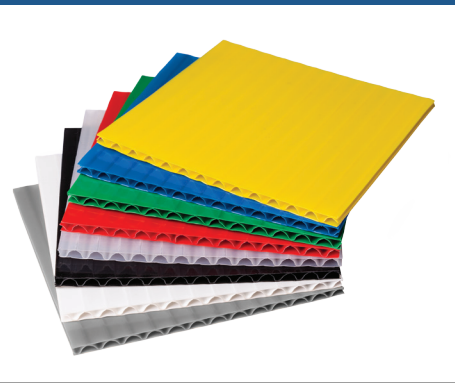
## TREE WRAP

- Standard Sizes
- Color Options: Natural or White/Black
- Recyclable & Reusable



## DOUBLE - FACED SHEETS

- Width: Up to 53.5"
- Length: Up to 96"
- Weight: 160#, 250#, 300#



## SINGLE - FACED ROLLS

- Width: Up to 53.5"
- Length: 250' or 500'
- Weights: 110#, 125#, 150#, 250#

## DOUBLE - FACED ROLLS

- Width: Up to 53.5"
- Length: 250' or 400'
- Weight: 160#

